

# Ghost Writer and the Broken Hand Break

Miet Warlop

## *General information*

Duration of the show : +/- 45 minutes

Intermission : no

Latecomers policy : patrons attending the show can enter late without restrictions.

Performers : 3

Technicians (company) : 2

Technicians (house) : 4 (2x light, 2x sound)

Standby technicians during the show: 2 (1x light, 1x sound)

Wardrobe (house): 1

The working schedule will be discussed in advance with the venue, according to the local standards. Please find a general schedule in annex 1 from this rider.

In order to judge the situation and to prepare an adapted light plot, please send us a CAD-drawing (\*.dwg) of the venue.

This technical rider - and the attached plans - is part of the contract between the company and the hosting organiser. Everything provided by the organisation is also paid by the organiser.

## *Contact information*

Production : Carla Beeckmans, Carla@mietwarlop.com

Technical : Bennert Vancottem, bennert@mietwarlop.com

## *Space*

Ghost Writer is a stage on stage performance performed in a black box with ideal dimensions of 15m x 15m and minimum dimensions of 12m x 12m. Other spaces shall be judged upon by the technical coördinator of Irene Wool. The performance space should be covered in black marley dance floor, provided by the hosting organiser.

## *Audience*

There is no use of the seating area in the auditorium. To decide the audience capacity the chart in annex 2 shall be used. Please provide some chairs for audience members who are unable to stand for the length of the performance.

To get the audience in as smooth as possible without intruding the performance space, we highly recommend the hosts to actively guide the audience.

## *Scenery*

The main set element consists of a spinning 'mill' with three light fixtures on it. The motor for this is brought by the company. The preferably black two point truss shall be provided by the hosting organiser, 3 x 3m is needed.

The motor, including trusses and light fixtures have a total weight of 70kg. The motor unit is certified for a maximum load of 150kg. More details are to be found in annex 6. The couplers on our motor system to rig the trusses are prolyte. If the venue provides another brand of truss (e.g. eurolite), than also please provide the 6 half couplers with an M12 bolt.

Furthermore the light- and sound control area are included in the performance space and consist of 2 black tables of risers which shall not be covered with black cloth or junco around.

## *Light*

A pre-rig according to adapted light plan will be discussed beforehand. In order to do so, a drawing as a .DWG file is needed in advance.

The organiser provides:

- 3 x ETC source4 zoom (25°-50°) or 3 x ETC source4 50° with an **iris**.
  - The opening angles are calculated to a 6m grid height, if maximum height of the grid is under 6m we will have to discuss a solution in order to reach the desired effect
  - **Important:** these 3 profiles are installed on a revolving system that provides the power for those lights through 2 slip contacts of 8A each, so the maximum for these profiles can never exceed 800 watts.
- 18 x PAR64 MFL (cp62)
- Minimum 12 floodlights of 1000W. More can be needed when performing in a larger venue.
- Gels according to the light plot (Lee 201, 202, 203 and 250)
- The light board (preferably Chamsys or GrandMA 2) of the venue shall be used, please provide a technician to program 4 submasters and 1 chaser. The details for this can be found in annex 4 of this rider. The show will be run by a technician from the company.
- In order to maximise safety on the operation of the motor structure, it is preferred to connect dmx-cable for the motor directly to the light board, in order to be able to unplug it in case of emergency. Alternatively a separate power connection can also act as a safety switch.

## *Sound*

'Ghost Writer' riffs on the possibilities of spinning and turning, and the sound should reflect this. We will need a special and powerful speaker layout for this!

The audience will be standing on stage with the actors, within the area of the speakers.

**Depending on the size of the venue we will decide beforehand which and how many speakers will be needed. There are two different options, depending on the size of the venue.**

**First option** is for a space/area SMALLER than 15 meters by 15 meters

- 9 powerful speakers with active processors and amps of the same brand, pro brand only, with 15 inch speaker and minimum a 2 inch driver. Same quality as L-acoustics X15. 1 Will be used as PFL next to the sound desk.
- All speakers must be separately controllable from a different output of the sound desk/preamp I/O rack with it's own dedicated amp.
- These speakers must be put on speaker stands. A minimum height of 1 meter 85 cm (6.1 feet) measured from the ground to the bottom of the speaker is required (people will walk/stand in front of them therefore this height is required)
- 4 very powerful subs, 18 inch, pro brand only, are required. If the subs lack the power needed, we will need 6 instead of 4. A whole lot of sub is used in this show!!!

**Second option** is for a space/are BIGGER then 15 meters by 15 meters

- 8 speaker stacks in different positions + 4 different Sub stacks are a minimum. 1 D&B M4 on D&B amp used as PFL next to the sound desk.
- All speaker stacks must be separately controllable from a different output of the sound desk with their own dedicated amps. Each speaker stack must consist out of 3x D&B Q1 line array speakers powered by D&B amps only. These speakers must be put on speaker stands. 1 meter 85 cm measured from the ground to the bottom of the lowest speaker. Each of the 4 sub stacks must consist out of 3 Q-sub, powered by D&B amplifiers only.

Furthermore, the following sound equipment shall be provided by the venue.

- Mixing board Midas M32, firmware version 3.08, preferred with Midas DL251 audio I/O system.
- 10 x wireless channels SHURE UR4D+, on a SHURE UA845UWB combiner will be needed. 10 x SHURE UR1 belt packs and 2 directional SHURE antennas on a microphone stand are also required. An XLR snake is required to connect these channels to the sound console.

- All wireless transmitters will require fresh, professional grade batteries for each performance and rehearsal, to be provided by the presenter.
- Please see the channel list in annex 5 for all required microphones, wireless to be provided!
- 1 guitar stand

Please ensure that the complete sound system is buzz- and hum free by providing adequate power supply.

The company provides:

- 1 Laptop running Ableton
- 1 TC-HELICON Voicelive 2
- 1 MOTU 16A
- Contact micro's/piezo pads
- 1 laptop running cuelab
- 1 floor tom
- 1 guitar fender Stratocaster with capo
- 1 saxophone
- 1 20inch cymbal
- drumsticks

## *Costumes*

Generally the costumes arrive 'dirty' in the theatre, so they need to be washed during the set-up. Normally a short washing programme and a drying cycle do the trick. Please refer to the costume list in annex 7 for further information.

We also bring 3 hairdryers approximately 1/2 hour before the show in order to dry up latex paint which is part of the maquillage. Bear this in mind as this produces quite some noise.

### Miscellaneous

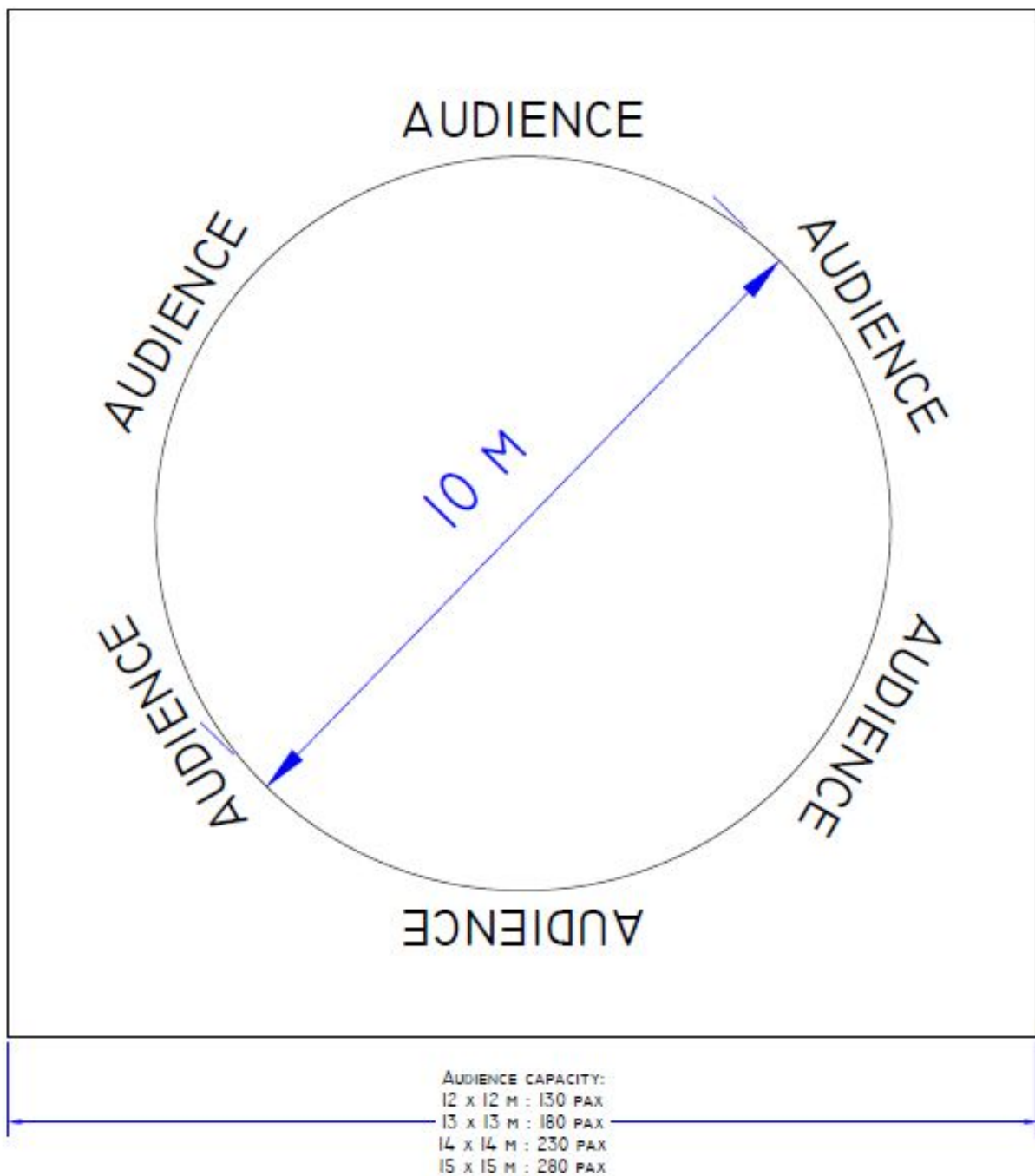
- During a certain moment the performers smoke a cigaret on stage. This should be addressed to patrons attending the performance according to the local regulations.
- Please provide 2 large, clean dressing rooms, equipped with adequate lighting, mirrors, shower and toilet.
- The room temperature in the dressing rooms and on stage should never be less than 21°C
- Fresh fruit (for sure bananas), chocolate (preferably dark chocolate with nuts), bread, cheese, snacks, water, fresh beer and coffee, tea etc are much appreciated. Please provide dry white wine on show days.

### Annex 1 : General working schedule

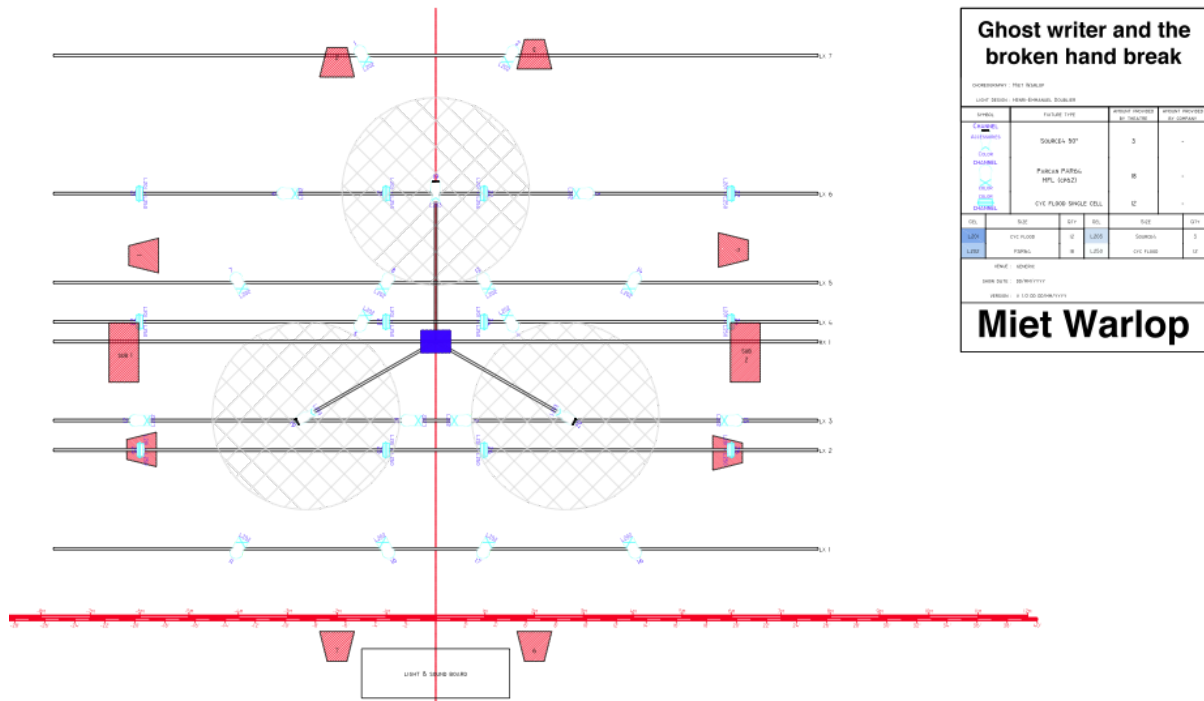
Planning version 1.0											
date	hour		action	Miet Warlop crew					Venue crew		
	strt	end		Sound	Light	Extra	Perf.	Tour.	sound	light	
day 1			pre-rig lights & set-up sound							2	2
day 2	9:00	13.00	focus & programming lights, set-up sound	1	1					2	2
	13:00	14:00	lunch technical crew								
	14:00	18.00	sound-check, run & notes	1	1		3			2	2
	18:00	19.00	dinner								
	19.00	20:00	prepare for show	1	1		3			1	1
	20:00	20:45	show	1	1		3			1	1
	20:45	22:00	get-out	1	1		3			2	2

Please note, an adapted working schedule will be agreed upon beforehand.

*Annex 2 : Audience space layout / capacity chart*



### Annex 3: Generic light plot



### Annex 4: Light - submaster layout

Fader	Channel id	Content
1	304	motor turns counterclockwise
2	305	motor turns clockwise
10	step 1: 1+7+13 step 2 : 2+8+14 step 3 : 3+9+15 step 4 : 4+10+16 step 5 : 5+11+17 step 6 : 6+12+18	Chaser Time: 0,13 S or 454 BPM
11	19+20	3 profiles
12	21 trough 26	all floodlights



*Annex 5: Sound - input and output list*

Input list		
Ch	Instrument	Mic/DI/xlr
1	VOX MIET	DPA 4088 cardio headset with heavy duty lavalier (old model) with SHURE TA4F to connect to the UR1
2	VOX PIET	DPA 4088 cardio headset with heavy duty lavalier (old model) with SHURE TA4F to connect to the UR1
3	VOX WIET	DPA 4088 cardio headset with heavy duty lavalier (old model) with SHURE TA4F to connect to the UR1
4	TC-FX	XLR from output TC Helicon,FX send is output 12
5	GUITAR	TS (jack) adapter to SHURE TA4F to UR1
6	Handheld drum	Sennheiser e604 + clamp + XLR F to UR1
7	Body Slaps	DPA 4660 skin colored + TA4F to UR1
8	SAX, <b>Only when specified in advance!</b>	<b>DPA 4099S + STC 4099</b> + TA4F to UR1
9	Contact micro 1/ piëzo pad,	TS (jack) adapter with TA4F to UR1,
10	Contact micro 2/ piëzo pad,	TS (jack) adapter with TA4F to UR1,
11	Contact micro 3/ piëzo pad,	TS (jack) adapter with TA4F to UR1,
13	VOX MIET 2	XLR Split from Channel 1
14	VOX PIET 2	XLR Split from Channel 2
15	VOX WIET 2	XLR Split from Channel 3
25	Surround return 1	TRS from output MOTU 16A to XLR (own snake)

26	Surround return 2	TRS from output MOTU 16A to XLR (own snake)
27	Surround return 3	TRS from output MOTU 16A to XLR (own snake)
28	Surround return 4	TRS from output MOTU 16A to XLR (own snake)
29	Surround return 5	TRS from output MOTU 16A to XLR (own snake)
30	Surround return 6	TRS from output MOTU 16A to XLR (own snake)
31	Surround return 7	TRS from output MOTU 16A to XLR (own snake)
32	Surround return 8	TRS from output MOTU 16A to XLR (own snake)

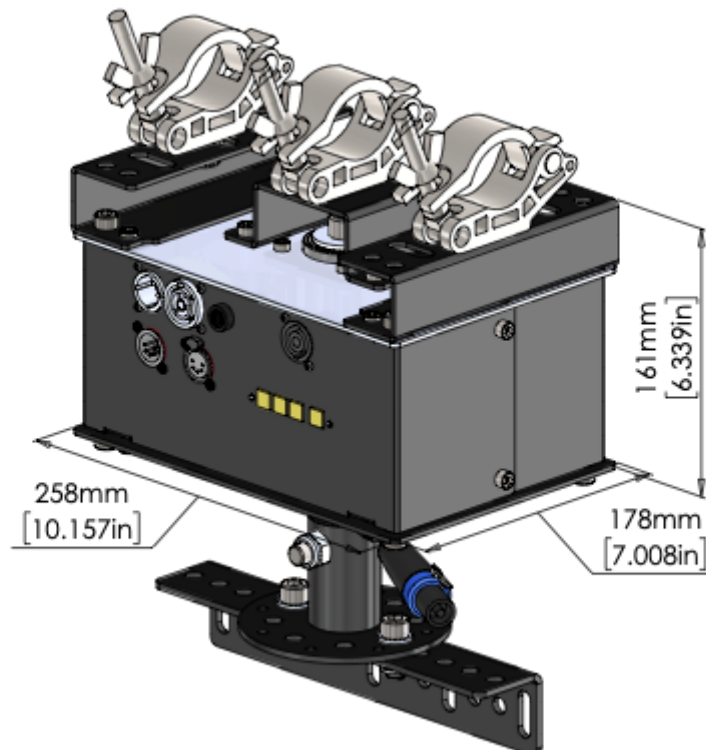
Output list	
1 - 8	speakers 1 - 8
9 - 10	subs
11	XLR to TRS FOR INPUT 1 ON MOTU 16A
12	XLR TO XLR TO INPUT TC-HELICON
15	PFL wedge

All wireless channels must be free of any noise and all frequencies must be officially cleared by the venue. We will not share any gear or frequencies.

## Annex 6: Motor certificate

# TECHNICAL DATA

MODEL: Rotator  
ITEM NO.: 281  
DIMENSIONS (LxWxH): 258 x 178 x 317 mm. / 10.2 x 7.0 x 12.5 in.  
POWER SUPPLY: 100-240 V AC 50 Hz/60Hz.  
POWER CONSUMPTION: Max 150 Watt  
POWER INLET/OUTLET: Neutrik powerCON TRUE1 NAC3PX (F/M)  
DMX CONTROL SIGNAL: DMX 512 1990 + DMX512A / 7 channels used.  
DMX CONNECTION: 5 pole XLR, In & link  
ROTATING LIMIT: No limit / Continuous rotation  
ROTATING SPEED: Variable, 0.15-6.8 rpm  
WORKING LOAD LIMIT (WLL): Shaft - down / 150 kg. (330 lb)  
Shaft - up / 100 kg. (220 lb)  
Shaft - sideways / 50 kg. (110 lb)  
SAFETY FACTOR: 10  
NOISE EMISSION: ~50 dB (max measured noise at 1 m/3.3 ft.)  
AMBIENT TEMPERATURE: 0-40°C (32-104°F)  
OWN WEIGHT: 11.8 kg (26 lb)  
MOUNTING CLAMP: 3x Slim eye coupler 50 mm (2 in)  
MOTOR: 24 V DC, 28.9 Watt, IP30  
MAXIMUM ATTACHMENT CURRENT: 1 + (1.5 mm<sup>2</sup>): 10A through power connection  
1 - (1.5 mm<sup>2</sup>): 10A through power connection  
2 + (1.5 mm<sup>2</sup>): 10A through power connection  
2 - (1.5 mm<sup>2</sup>): 10A through power connection  
INLET / OUTLET: Neutrik SpeakON NL4MP/NL4FX



## *Annex 7: costume list*

### **Miet:**

Black shorts  
Black pullover with zipper  
White socks size 35-38, new  
Adilette slippers size 5

### **Wietse:**

Trackpants , with clothespin in pocket (to be removed for laundry)  
Pair of marked underpants  
White socks size 39/42, new  
Adilette slippers size 7

### **Joppe:**

Trackpants  
Pair of marked underpants  
White socks size 39/42, new  
Adilette slippers size 9

### **Frut:**

Trackpants  
Pair of marked underpants  
White marked socks, to be washed  
Black marked sweater  
Adilette slippers size 11

### **Niels:**

Trackpants  
Pair of marked underpants  
White marked socks, to be washed  
Black marked sweater  
Adilette slippers size 8

### LAUNDRY INSTRUCTIONS:

4 pairs of black trackpants, marked by name to be washed on 30' , short program (sports)

**!! Don't forget to take out the clothespin out of Wietse his pants and put it back afterwards!!**

Underwear can be washed with pullovers : black cotton, if needed: add black textile paint

White socks (the marked ones) to be washed as white cotton, if needed: use "ossegalzeep" (Ox Gall Soap) on the spots

In case of questions:

Karolien nuyttens  
0032486374457

Pictures

