

Technical Rider final version

FASO DANCE COMPANY

KALAKUTA REPUBLIK

Serge Aimé Coulibaly



- Technical coordination: Sam Serruys - Tel: +32477362335 - sam.serruys@me.com
- Production and tour management: Laure Louvat - Tel: +33664216440 - laurelouvat@gmail.com

Timetable

- Arrival: 09:00 AM
- Setup Video and sound: 09:00 -13:00
- Setup light and focus: 09:00 - 13:00
- Set up set: 09:00 - 13:00
- Lunch: 13:00 - 13:30
- Finalizing light + sound + video: 13:00 - 16:00
- Arrival Dancers for warm-up and spacing: 16:00 – 19:00
- Doors open: 15 minutes before start show
- Showtime Part 1: 40min
- Pause: 15min
- Showtime Part 2: 30min
- Strike: 45 min
- Dinner: After performance including technicians

Technical crew

Kalakuta Republik will travel with 2 technicians.

Please provide 3 friendly all round experienced Technicians from the venue.

1 all round technician from the venue stand-by during the performance.

SET

We may use masking, please do not put borders and legs before our arrival. The scenery will be sent in one small truck. Please check accessibility to loading dock and secure parking. **Please Provide black dance carpet on the floor upon arrival.**

Please make sure, that the stage, side stage and loading dock is **empty** upon our arrival.

Kalakuta Republik Set Contains:

- 1 large Sofa
- 2 large projection screens that will be fixed on the Wind ups and tubes provided by the theatre. **Projection screens are treated with BRANDEX fire retardant impregnation.**



- 30 chairs
- Disco Ball
- 4 carpets

To be provided by the theatre:

- Flightcase 40x40 cm black on wheels

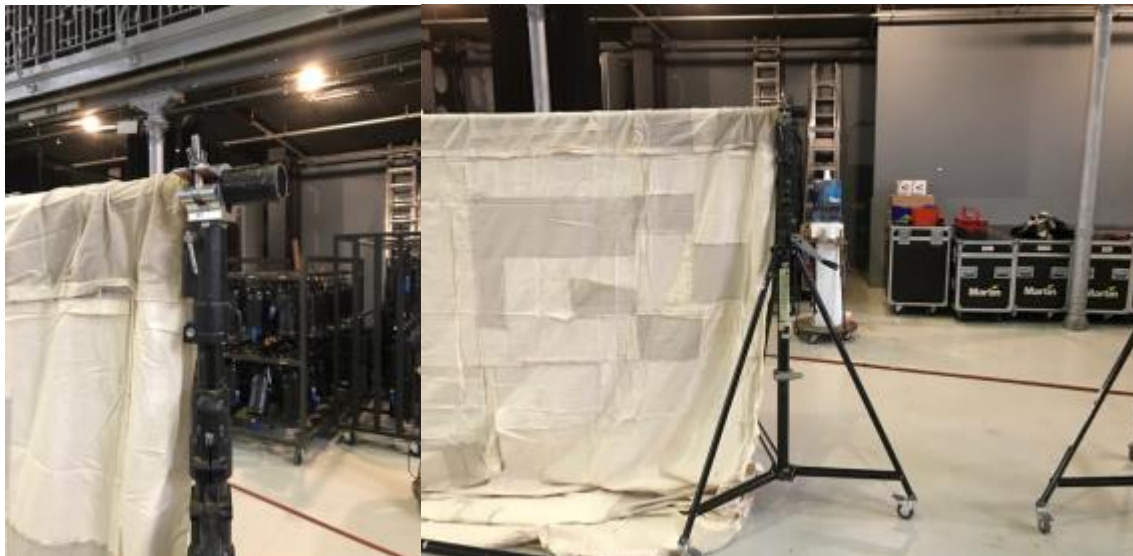


STAGE DIMENSIONS

12 m wide and 12 m deep and 8m high. Stage dimensions can be discussed with the technical coordinator

Rigging

To be provided by the theatre:



- 4x Manfrotto's type 087NWB (black) on wheels (height 3m75)
- 4x Spigot
- 4x Trussclamb
- 2x black Alu tubes (6m) to be fixed on the manfrotto's

LIGHT

To be provided by the theatre:

- 21 x identical 1Kw PC (with barndoors)
- 8 x 2Kw PC (with barndoors)
- 10 x 1Kw Profile 15°
- 12 x Par64 CP62
- 4 x ACP
- 6 x Par 36 (pinspots)
- 8 x light stand or towers. (30cm)
- 6 x floorstands for par 36

Dimmer circuits: All lights on separate dimmers.

Filters: Please check light plot.

we will use a light desk (dmx512) from the venue capable to record light cues.

VIDEO

To be provided by the theatre:

- 1 beamer at front of house position with at least 10000 ansi lumen with for front projection aprox. 10x 6m with DVI input
- 2 identical beamers min 5000 ansi lumen with 0.78 fix zoom lens for retro projection.

NOTE: For 250 Euro The company can provide the 2 beamers for retro projection.

Renting price is normally triple! Contact Technical coordinator for more information.

- Please provide 2 x HDMI connection from stage to front of house where technical crew is located to run the show.

provided by the company:

- Laptop + Matrox + Millumin.

SOUND

To be provided by the theatre:

- One high quality, undistorted and noiseless professional system. (D&B, L acoustics, Meyer, Nexo)
Our main concern is to the dispersion of the sound. From each seat of the hall the sound must be of equal volume and constant frequencies bandwidth. The company sound engineer must have total control over the set-up, volume and equalization of the P.A. If there is a balcony, provide an extra flying system with separate amplifiers and delay lines. The mixing desk should be placed in the centre between the left and right PA stacks at 2/3 of the length of the venue, NEVER under balconies and always on the same level as the audience.
- Audio mixing desk (good quality) analogue or digital with at least 8 input channels and 4 aux sends, 2 main outs and 4bands parametric eq on input channels. in case of analogue desk please provide professional 6 mono graphic eq's on the outputs. Please provide processor to delay FOH or monitors.
- 4 wedges 12 or 15 inch (L'acoustics, D&b, Nexo, Martin) All the same type. No Behringer, Mackie or yamaha please.
- 1 wireless handheld Mic (sennheiser, shure) with receiver.
- 2 active di's (radial/BSS)

provided by the company:

- Laptop and soundcard.

Wardrobe

- One dresser is required each day of a performance. There should be at least one washing machine and one dryer available in the theatre. The costumes should be washed, dried and ironed. Depending on the facilities, this must happen right after the performance or the next morning.

IMPORTANT: AFTER THE FIRST PART PAINT WILL BE ON THE CLOTHES OF THE DANCERS. CLOTHES OF PART 1 MUST BE WASHED DIRECTLY AFTER THE FIRST PART OF THE SHOW.

- On strike days, this should happen immediately after the performance! The dresser also should fix costumes; in case they break or get damaged during the performance. Upon request, we can provide a list of the costumes and how they need to be treated.

Dressing room

- 2 lockable dressing rooms for the performers with tables and chairs
toilets, showers and towels a freezer compartment to store cold packs, within reach of the dressing rooms after the performance
All these facilities should be in a non-public area

Requested information

- Medical services: a list of the following should be available in the theatre: dentist, chiropractor, physiotherapist, doctor, ...

Responsibility

- The theatre oversees the security of the whole equipment from the moment of arrival at the venue until the moment of departure.

Fire

- One moment a performer is smoking a cigarette on stage. Please check Fire alarm!!

Catering

- Fresh fruit, sandwiches, snacks, salads, juice and water for the set-up day and the day/days of performance/s are highly appreciated. For each day, there should be enough still water available!

Transport

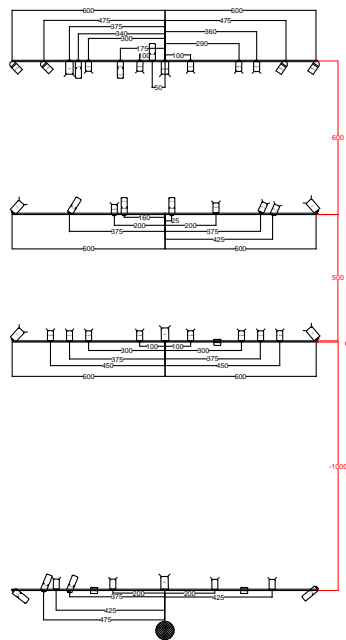
- Our truck will arrive the day before the build-up day.
Is it possible to reserve parking space for the whole period of our stay and a free path way

to the loading dock?

The technical rider is part of the contract and is binding!

LIGHT PLOT KALAKUTA REPUBLIK

PLEASE NOTE THAT THE 8 X PAR64 ON THE FLOOR ARE AT 30CM HEIGHT. PLEASE PROVIDE STANDS (8) THAT ARE HIGH ENOUGH.



	PC 1KW banddoor	x21	L195 L162 RT19	
	PC 2KW banddoor	x8	L201	
	profile 15'38"	x10		
	PAR64 CPE2	x12	L201 L106	floorstands(30cmhigh) x8
	PAR 36	x6		floorstands x6
	ACP 1KW	x4	L119 RT14	floorstands x4

FLOOR LIGHTS AND STAGE DIMENTIONS

